

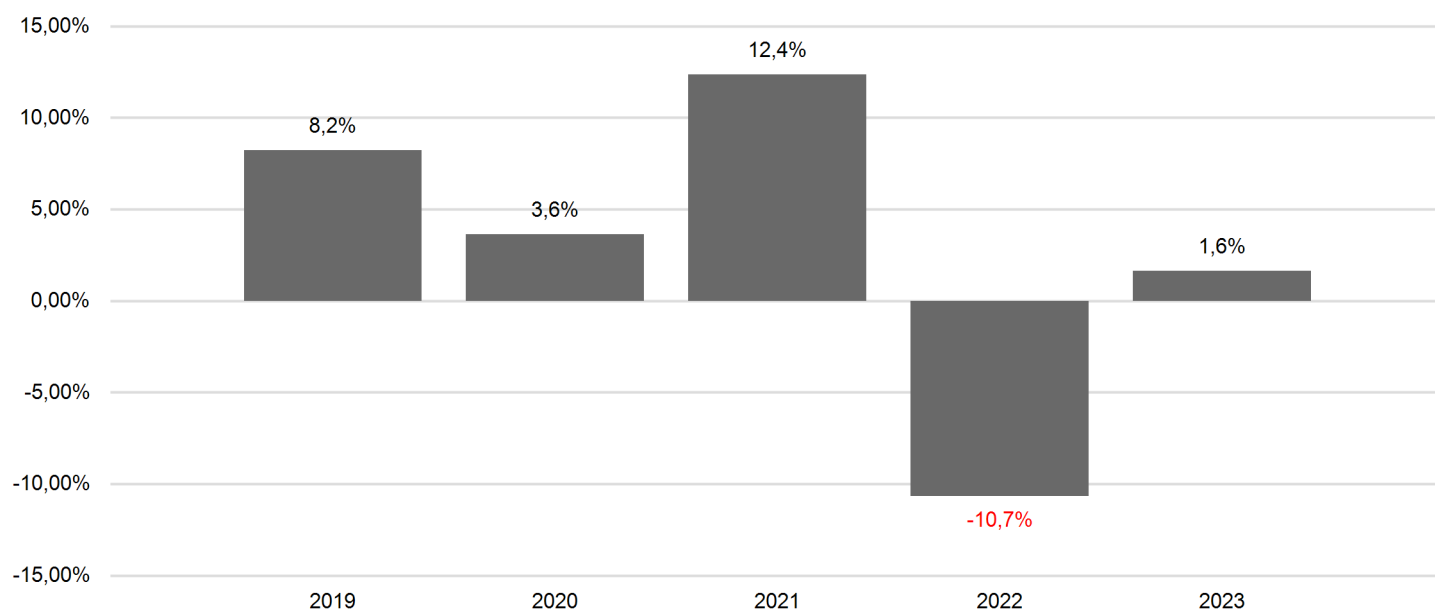
Past Performance

Product

Name:	DJE - Concept - PA (EUR)	Name of the PRIIP-Manufacturer:	DJE Investment S.A.
ISIN:	LU0858224032	WKN:	A1J8MD
Date of production:	16.02.2024	Contact details:	www.dje.lu +352 26 92 52 20 info@dje.lu
Supervisory authority:	The Commission de Surveillance du Secteur Financier (CSSF) is responsible for the supervision of DJE Investment S.A. with regard to the Key Information Document. This Fund is authorised in Luxembourg and regulated by the Commission de Surveillance du Secteur Financier (CSSF).		

Past Performance

This chart shows the fund's performance as the percentage loss or gain per year over the last 10 years.



Past performance is not a reliable indicator of future performance. Markets could develop very differently in the future. It can help you to assess how the fund has been managed in the past.

Performance is shown after deduction of ongoing charges. Any entry and exit charges are excluded from the calculation.

The unit class was established in 2019.

Performance was calculated in EUR.

The unit class inherits the historical performance of the transferring unit class PA of the "DJE Concept". The historical performance has been taken over by the DJE Investment S.A. and relates to the period since the first issue of unit class PA of the "DJE Concept" in 2013 till 30 September 2019. The "DJE - Concept" has essentially the same investment strategy.